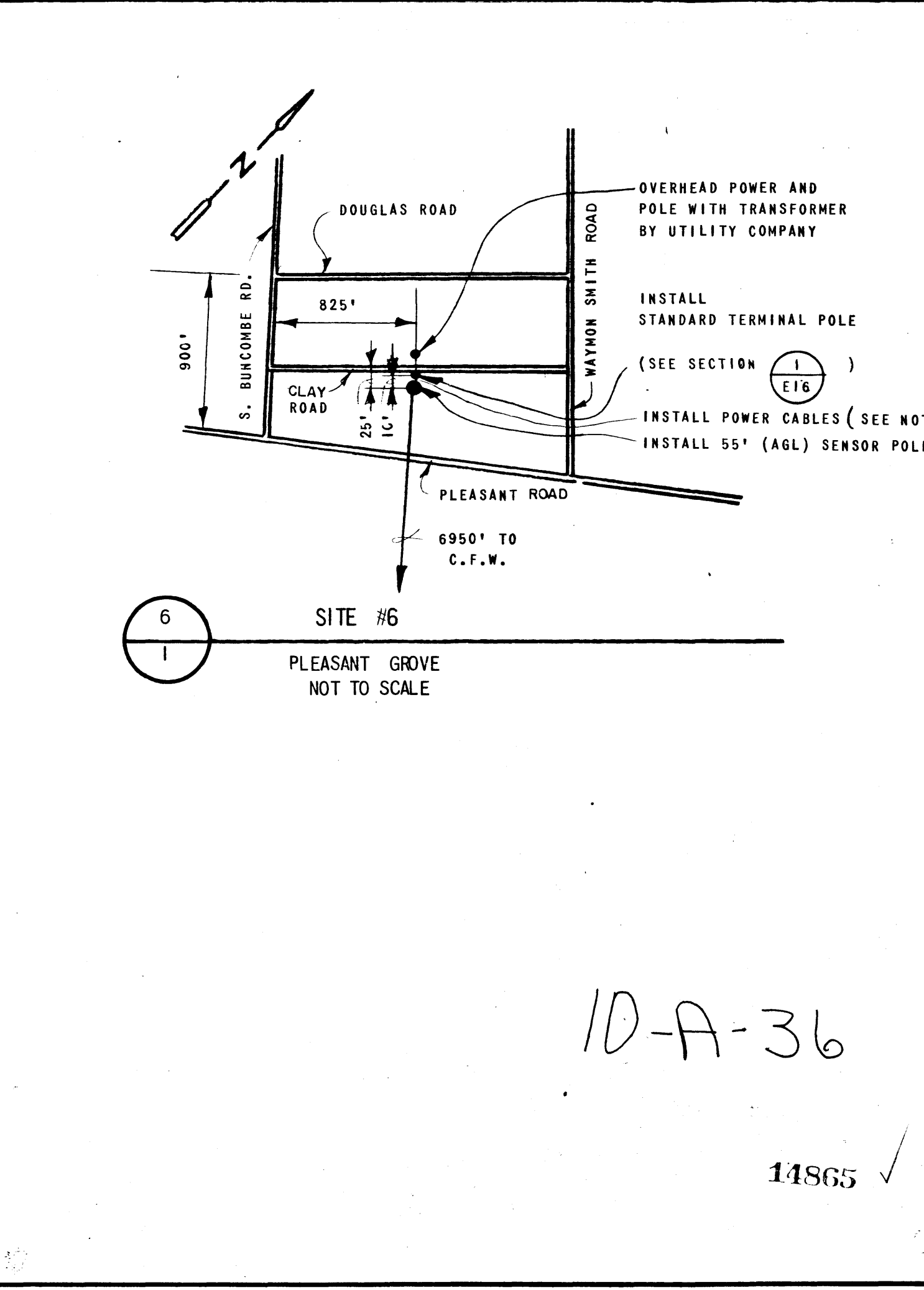
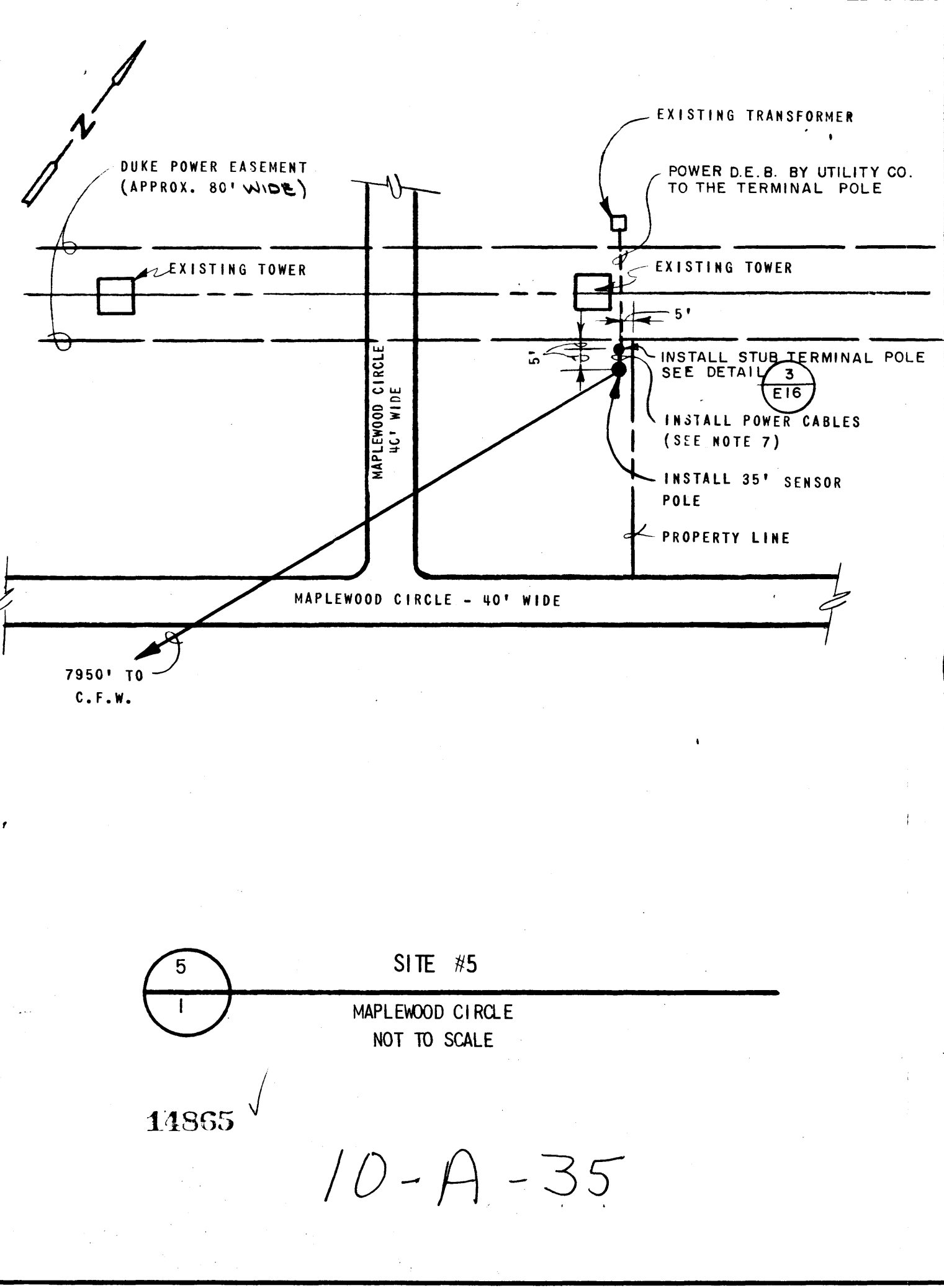
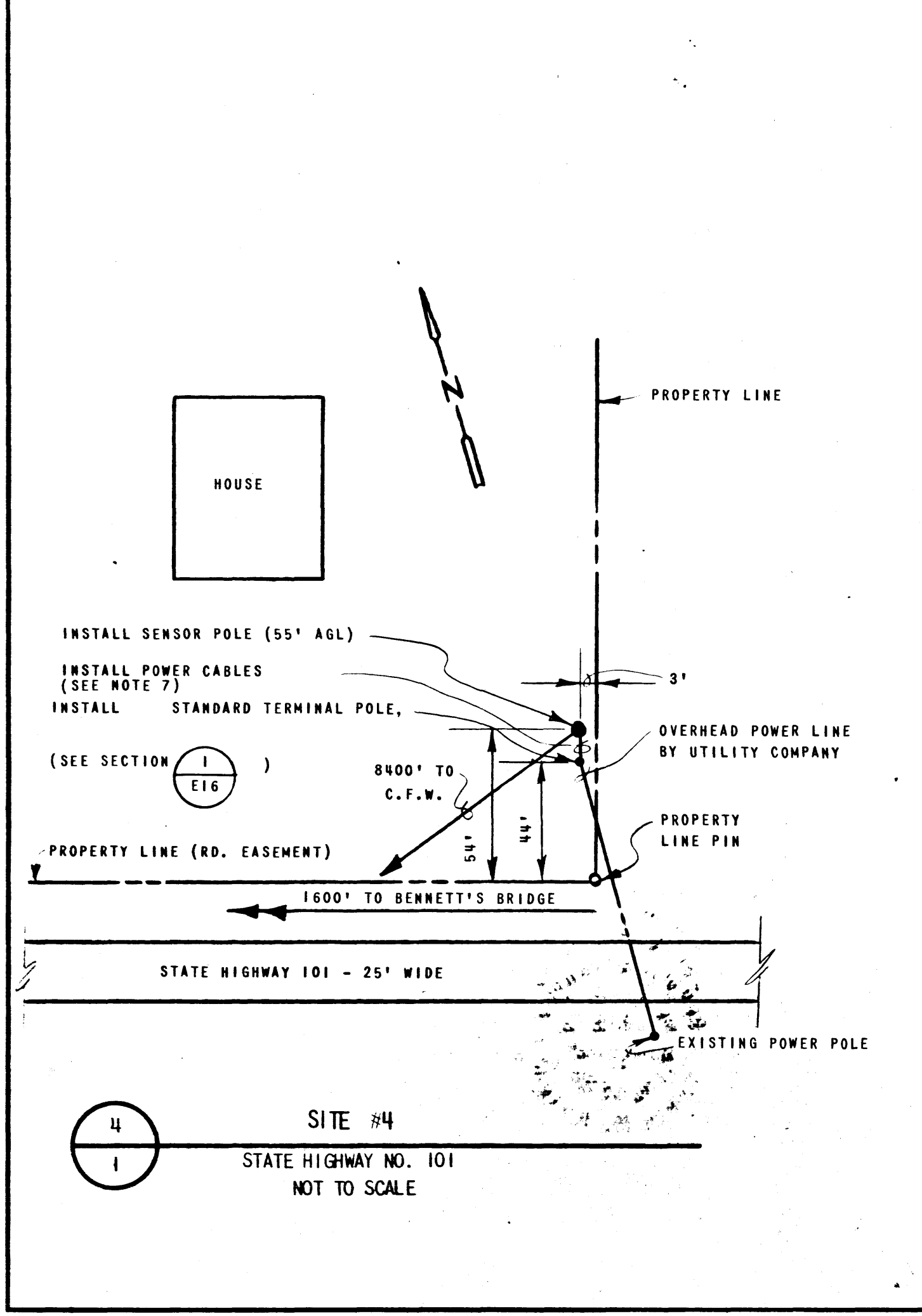
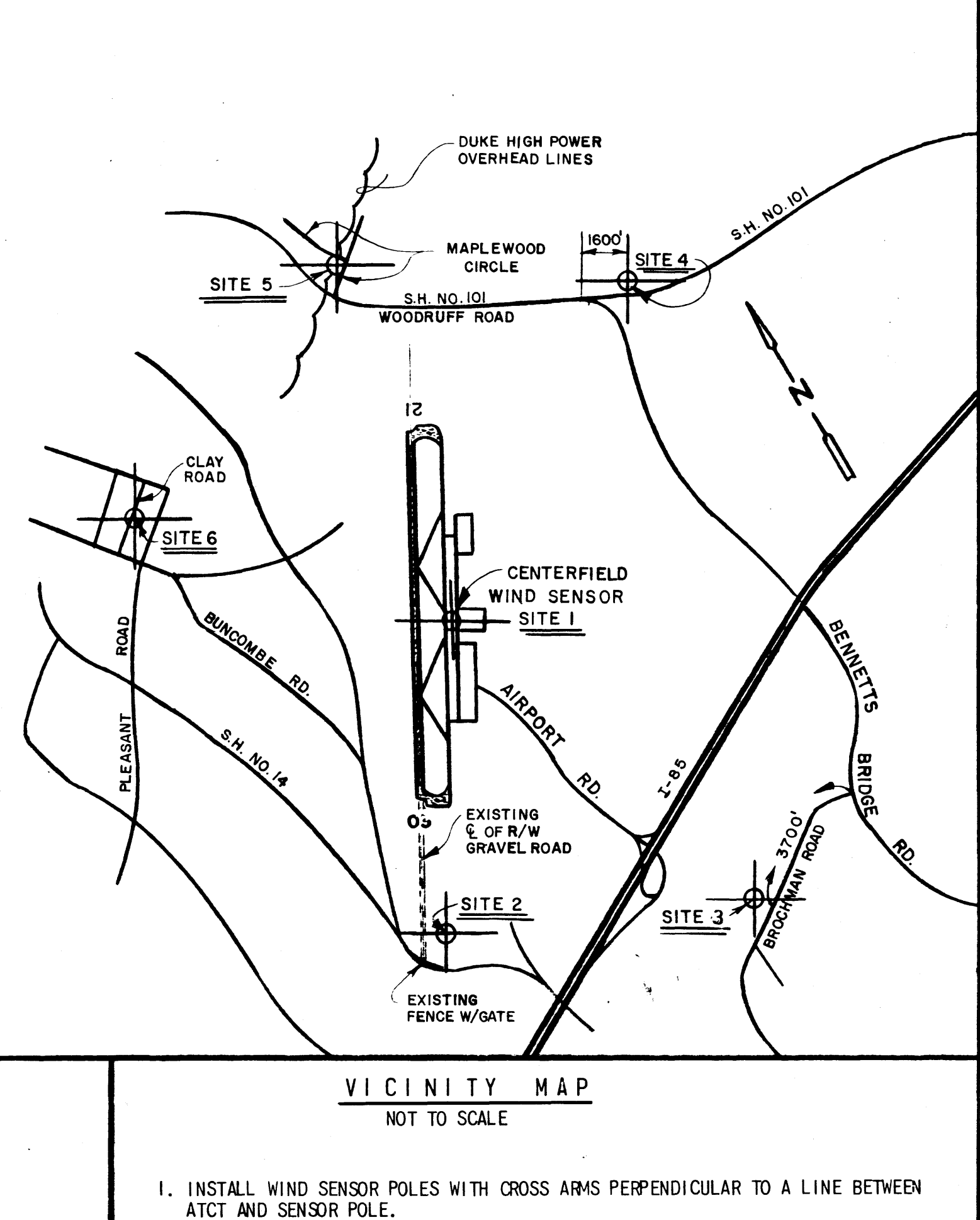
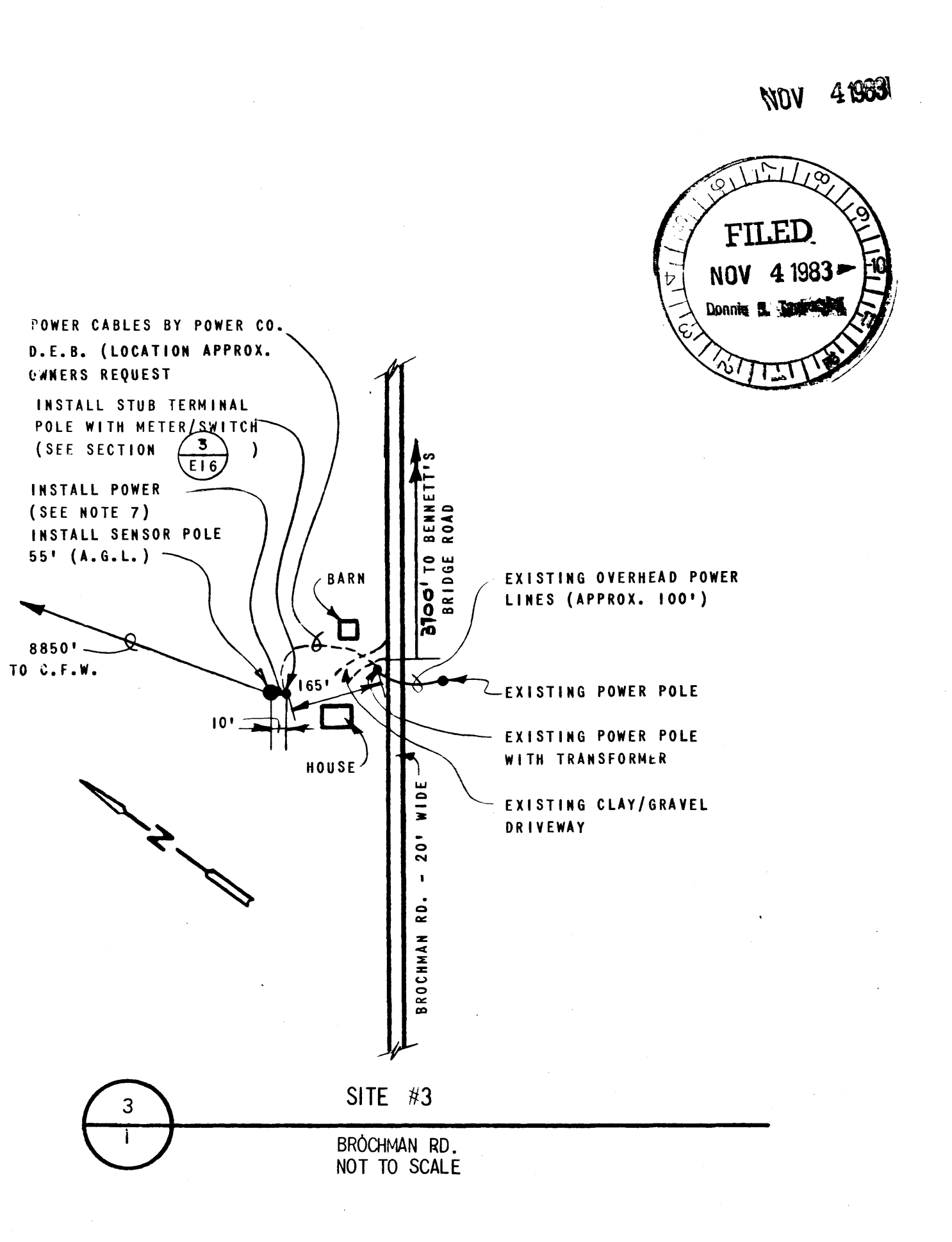
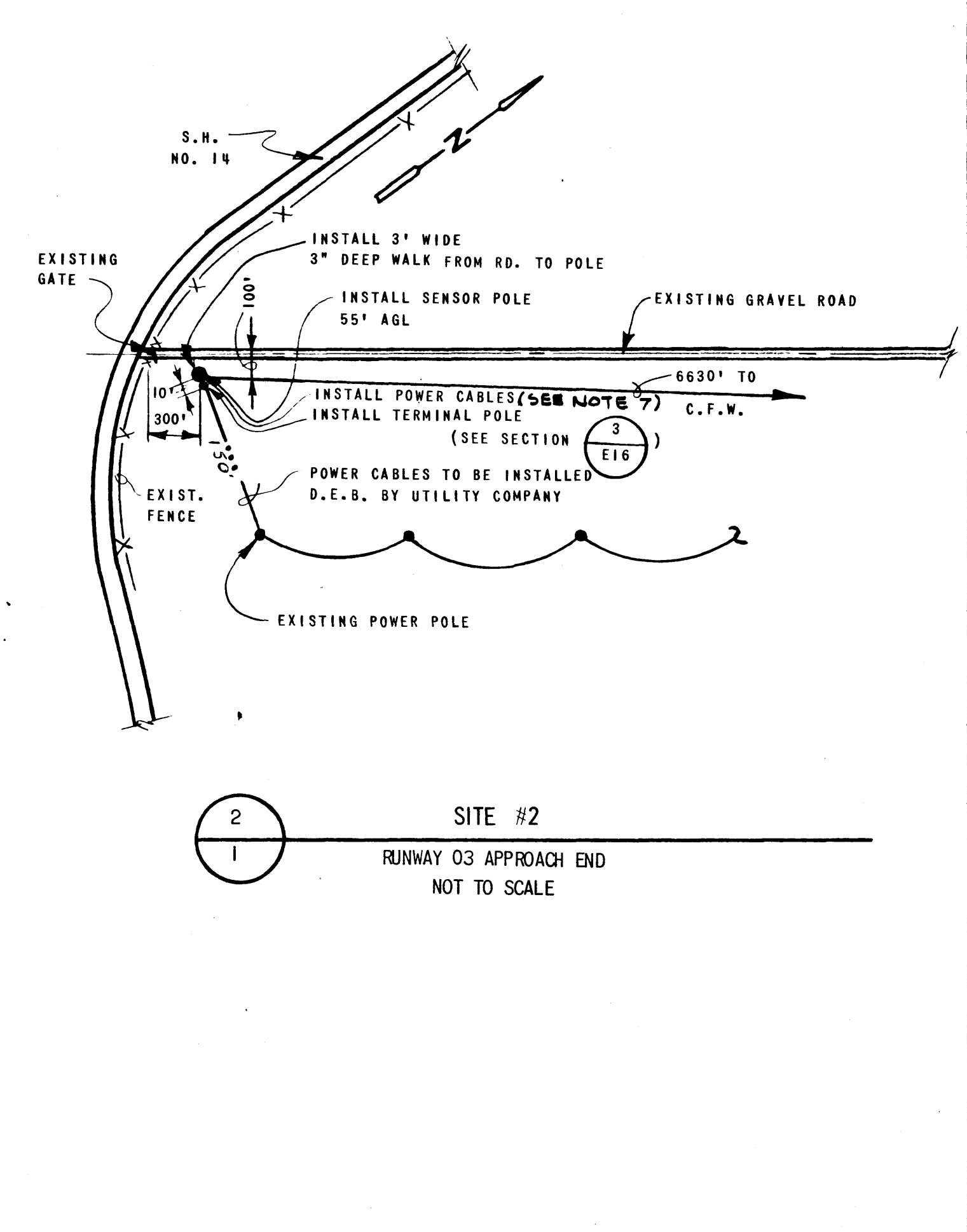
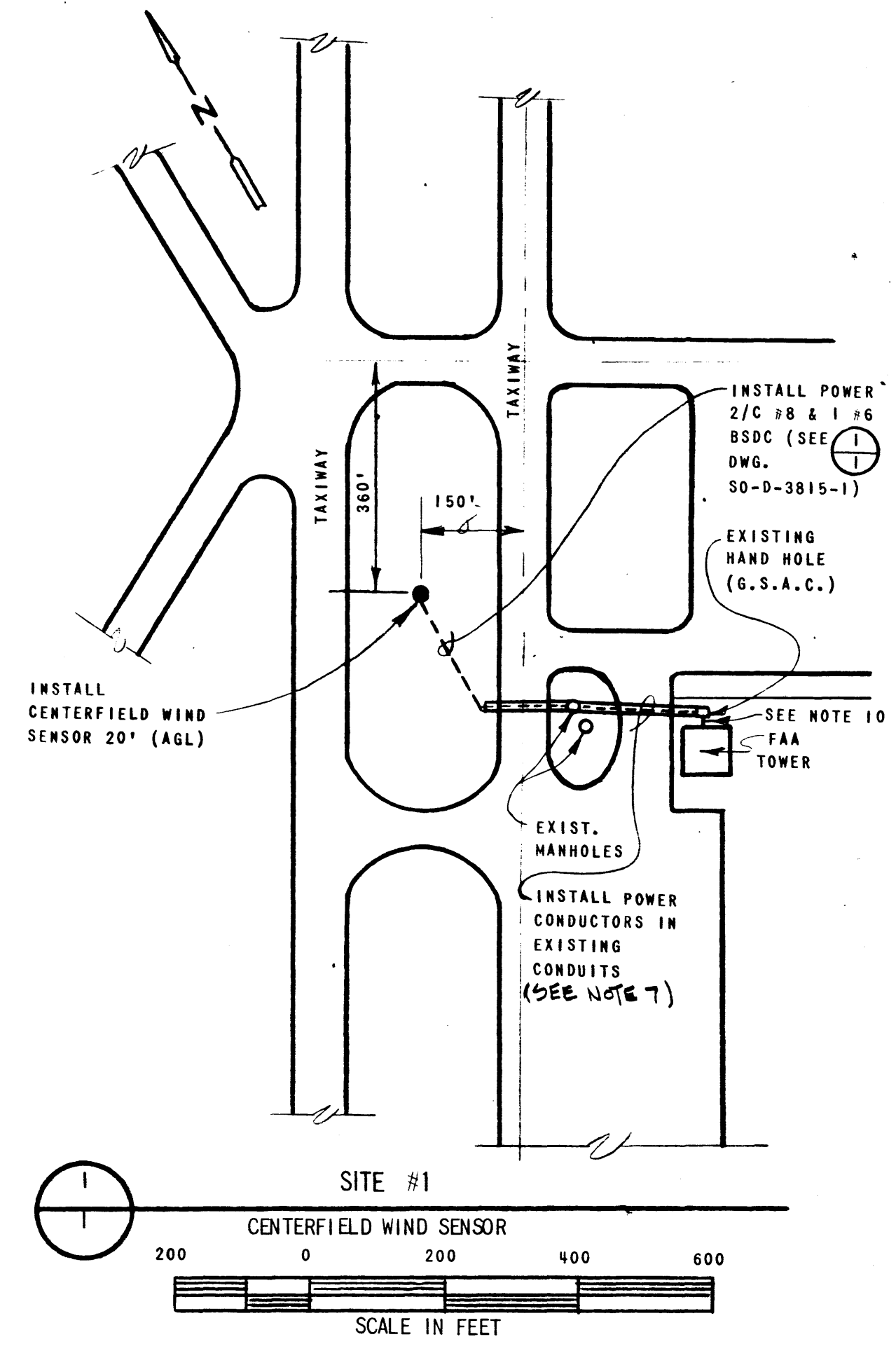


A 27590



1. INSTALL WIND SENSOR POLES WITH CROSS ARMS PERPENDICULAR TO A LINE BETWEEN ATCT AND SENSOR POLE.
2. RESIDENT ENGINEER WILL CONTACT AIRPORT AUTHORITY AND PUBLIC UTILITY COMPANIES TO DETERMINE LOCATIONS OF ANY BURIED CABLES IN LOCATIONS OF TRENCHING.
3. MOUNT SAFETY CLIMBING DEVICE (GFM) ON ALL SENSOR POLES.
4. NO GFM ENCLOSURES SHALL BE INSTALLED. DISREGARD DETAIL (2/3) DRAWING 50-D-3666-3.
5. NOT USED
6. INSTALL GRAVEL AROUND EACH SENSOR POLE AT SITES #2, 3, 4 & 6, 3" THICK, 6' DIA.
7. SERVICE CONDUCTORS SHALL BE 2C #8 & 1 #6 BSDC IN 1" RIGID STEEL CONDUIT.
8. SITES #4&6 TERM. POLE MUST BE GUYED IN ACCORDANCE WITH LOCAL UTILITY CO. REQUIREMENTS.
9. AT SITES #3 & 6 INSTALL METER ON TERMINAL POLE SUCH THAT METER CAN BE READ FROM ROADWAY.
10. EXTEND WIRING TO EXISTING SQ. "D" DIST. PANEL TFL. FURNISH AND INSTALL A IP - 20A. BREAKER AND CONNECT. INSTALLATION OF APPROX. 10' OF CONDUIT WILL BE REQUIRED TO CONNECT TWO EXISTING RACEWAYS. THIS WILL PROVIDE A RACEWAY TO EXTEND FROM THE ENTRANCE INTO THE BASEMENT TO PANEL TFL. COORDINATE WITH R.E. AND LOCAL SECTOR TECHNICIAN.

REV./LTR.	DATE	DESCRIPTION	CHECKED	APPROVED
DEPARTMENT OF TRANSPORTATION FEDERAL AVIATION ADMINISTRATION SOUTHERN REGION ATLANTA, GEORGIA 30320				
LLWAS REMOTE AND CENTERFIELD SENSOR SITE PLANS				
Greer		(Greenville-Spartanburg Airport)		S.C.
REVIEWED BY 483.4 483.31	SUBMITTED BY <i>M. A. Montgomery</i> 4/11/83	APPROVED BY <i>N. L. Lane</i>		
DESIGNED BY 429	DRAWN BY CWF	ISSUED BY AIRWAY FACILITIES DIVISION	DATE 5/5/83	CREATED BY LTR.
CHECKED BY 463	DRAWING NO. SO-D-3945-1			

10-A-36